

**TESTING OF SHEETPILES**

Customer : Handelsmaatschappij Gooimeer B.V.  
Damsluisweg 67, 1332 EB Almere

Material : -

Nominal wallthickness : 10 mm

Purpose : Comparison of 3 types sheetpiles

Reference no. : -

Certificate no. : MKW 05-1630/32

Order no. FDO : OMKW 5920

Amsterdam : 2005-10-07

**RECIEVED**

Specimen no.

2 monsters sheetpiles type AZ18, FDO mark F1630 (see photo)

2 monsters sheetpiles type PZC18, FDO mark F1631 (see photo)

2 monsters sheetpiles type H1700, FDO mark F1632 (see photo)

**CODE: EN 10248**

**RESULTS OF THE TESTS**

<b>TENSILE TEST</b>		[Longitudinal]		[Test temperature ° C: ambient]		
Specimen no.	Diameter [mm]	Cross section [mm <sup>2</sup> ]	Gauge length [mm]	ReH [MPa]	Rm [MPa]	A5 [%]
F1630	25,1x9,9	248,5	89	471	564	24,5
F1631	25,1x9,4	235,9	86	432	513	26,5
F1632	25,1x9,6	241,0	88	451	580	27,5
<b>Requirements (S240GP)</b>				min. 240	min. 340	min. 26
<b>Requirements (S270GP)</b>				min. 270	min. 410	min. 24
<b>Requirements (S320GP)</b>				min. 320	min. 440	min. 23
<b>Requirements (S355GP)</b>				min. 355	min. 480	min. 22
<b>Requirements (S390GP)</b>				min. 390	min. 490	min. 20
<b>Requirements (S430GP)</b>				min. 430	min. 510	min. 19

**THICKNESS MEASUREMENTS**

Specimen no.	Sheetpileside [t] [mm]	Sheetpileside [s] [mm]
F1630	9,47	9,45
F1631	10,13	9,72
F1632	9,84	9,78
<b>Requirements (t &gt; 8,5) (s &gt; 8,5)</b>	± 6% of t	± 6% of s

**TENSILE TEST ON THE CONNECTION**

Specimen no.	Dimensions [mm]	Maximum crushed force [kN]
F1630	100	80,1
F1631	100	194,3
F1632	100	89,3

**CONCLUSIONS/ REMARKS**

The mechanical properties meet the requirements of S240GP, S270GP, S320GP, S355GP, S390GP and S430GP.

No requirements available for the tensile tests on the connection.

The chemical examination is not measured.

Stork FDO B.V., Materials Testing Department

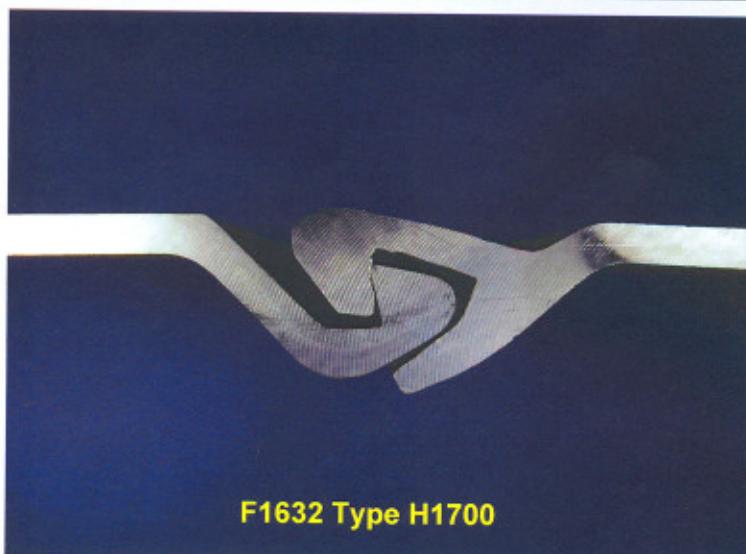
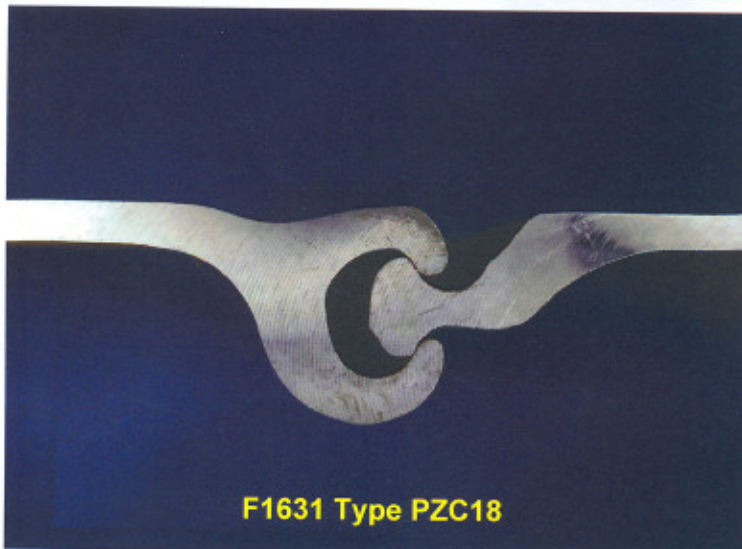
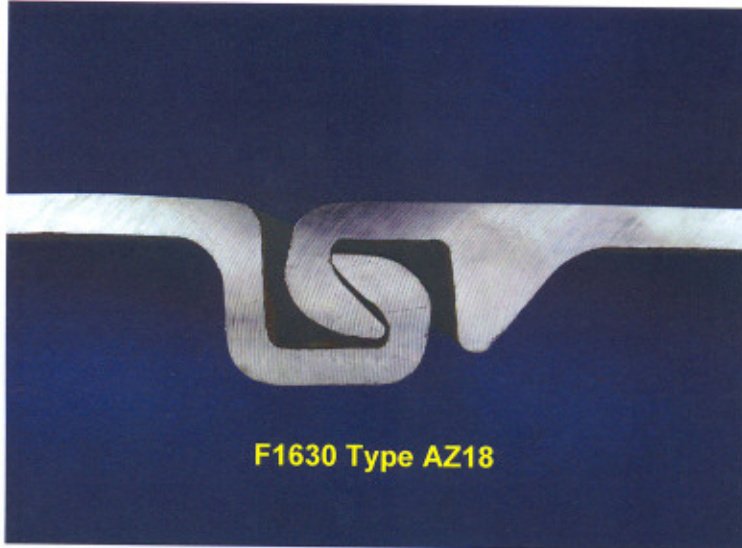
Verified:



Authorised: G.V. Tokarenko



OVERVIEWPICTURES OF THE DIFFERENT  
SHEETPILECONNECTIONS BEFORE TESTING



**OVERVIEWPICTURES OF THE DIFFERENT  
SHEETPILECONNECTIONS AFTER TESTING**

